



Models- 8105, 9225 – 9235  
Commercial Vacuums

Page 2	Product Information
Page 3	Product Dimensions
Page 4	Specifications
Page 5	Important Safety Instructions
Page 5-8	Installation
Page 9	Programming
Page 10	Operating
Page 10	Maintenance
Page 11	Troubleshooting
Page 12-19	Parts List
Page 20-24	Wiring Diagram



# **PRODUCT INFORMATION**

Please take a moment to fill out the information below in order to aid us with any future sales or service inquiries. Model number and serial number information can be found on the serial tag located inside the control box and/or on the lower exterior of the can. Key number can be found on the tag that comes attached to the keys. There may be more than one key number depending on unit.

**Please keep this information with your records.**

**MODEL#:** \_\_\_\_\_

**SERIAL#:** \_\_\_\_\_

**KEY NUMBER(S):** \_\_\_\_\_

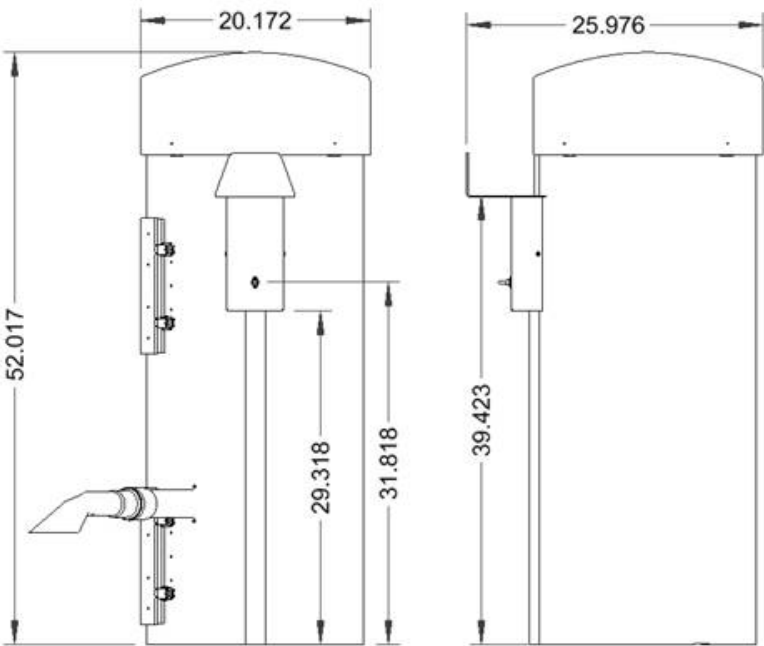
**DATE PURCHASED:** \_\_\_\_\_

**DISTRIBUTOR:** \_\_\_\_\_

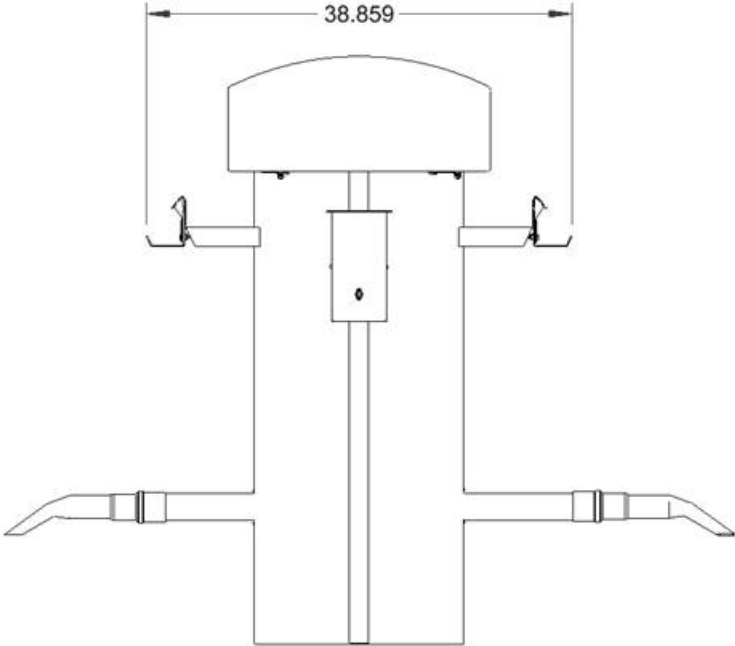
**J.E. Adams Industries  
1025 63rd Ave. S.W.  
Cedar Rapids, IA 52404  
1-800-553-8861**

**[www.jeadams.com](http://www.jeadams.com)**

# PRODUCT DIMENSIONS



9225



9235-3DH

# Specifications

Unit specifications: (8105, 9225, 9225-2, 9235, 9235LD)

Voltage: 120vac, 60hz  
Amperage: (1) 20 amp service is required for this unit.  
Weight: 110-135 lbs with pallet attached.

2 Motor 120V Vacuum Units

Vac specifications:

Motors: (2) 120vac vacuum motors.  
Fuses: (2) 10 amp inline fuses.

---

Unit specifications: (9225-3, 9235-3, 9235-3LD, 9235-3DH, 9235-3DH-WALL)

Voltage: 120vac, 60hz  
Amperage: (1) 30 amp service is required for this unit.  
Weight: 140 lbs with pallet attached.

3 Motor 120V Vacuum Units

Vac specifications: (9225-3, 9235-3, 9235-3LD, 9235-3DH, 9235-3DH-WALL)

Motors: (3) 120vac vacuum motors.  
Fuses: (3) 10 amp inline fuses.

---

Unit specifications: (9225-220V, 9235-220V, \*9235-3-220V, \*9235-3DH-220V)

Voltage: 220v, 50hz  
Amperage: (1) 15 amp service is required for 2 motor units, \*(1) 20 amp service is required for 3 motor units.  
Weight: 125-140 lbs with pallet attached.

2 & 3 Motor 220V Vacuum Units

Vac specifications:

Motors: (2) or (3) 220vac vacuum motors depending on model.  
Fuses: (2) or (3) 8 amp inline fuses, depending on model.

Duty cycle time 4 minutes on, 4 minutes off.

**NOTE: "UNIT INTENDED FOR COMMECIAL USE ONLY"**

# IMPORTANT SAFETY INSTRUCTIONS

When using an electrical appliance, basic precautions should always be followed, including the following:

## READ ALL INSTRUCTIONS BEFORE USING (THIS APPLIANCE)

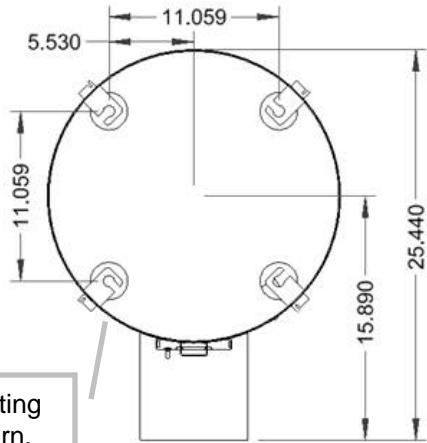
### WARNING – To reduce the risk of fire, electric shock, or injury:



- Do not use on wet surfaces.
- Use only as described in manual. Use only manufactures recommended attachments.
- Do not allow to be used as a toy. Close attention is necessary when used by or near children.
- Do not put any object into openings. Do not use with any opening blocked; keep free of dust, lint, hair and anything that may reduce air flow.
- Keep hair, loose clothing, fingers, and all parts of body away from openings and moving parts.
- Do not use to pick up flammable or combustible liquids, such as gasoline, or use in areas where they may be present.
- “Do not pick up anything that is burning or smoking, such as cigarettes, matches, or hot ashes.”
- “DO not use without dust bag and/or filters in place.”

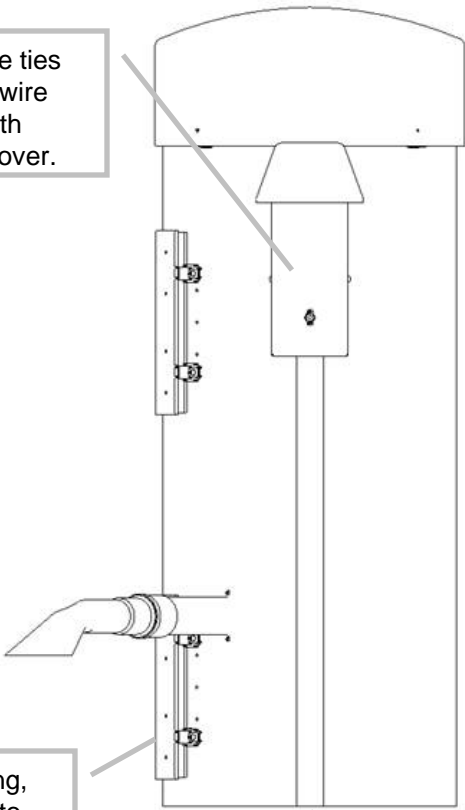
## SAVE THESE INSTRUCTIONS

- **Installation Instructions:**
- Determine location to mount unit (“**DANGER**” “**THIS EQUIPMENT INCORPORATES PARTS SUCH AS SWITCHES, MOTORS, OR THE LIKE THAT TEND TO PRODUCE ARCS OR SPARKS THAT CAN CAUSE AN EXPLOSION. WHEN LOCATED IN GASOLINE-DISPENSING AND SERVICE STATIONS INSTALL AND USE AT LEAST 20 FEET (6 M) HORIZONTALLY FROM THE EXTERIOR ENCLOSURE OF ANY DISPENSING PUMP AND AT LEAST 18 INCHES (450 MM) ABOVE A DRIVEWAY OR GROUND LEVEL.**”
- Run electrical service to that location (*NOTE UNIT HAS WIRE PROVIDED UNDERNEATH TO CONNECT INCOMING POWER SUPPLY*)
- **Grounding Instructions:** This appliance must be connected to a grounded metal, permanent wiring system; or an equipment-grounding conductor must be run with the circuit conductors and connected to the equipment-grounding terminal or lead on the appliance.
- All local and national electric codes must be followed for installation and use.
- Licensed electricians are recommended for installation.



Mounting pattern.

Incoming wire ties into factory wire underneath removable cover.



When mounting, allow access to cleanout doors.

Bring incoming power up through the service channel.



Detailed view: incoming power to terminal strip.

Once unit has been installed use 5871B8 cap plugs (supplied with unit) to seal holes in canister bottom located in lower cleanout door (see illustration on next page). Extra cap plugs are included with the unit in case plug becomes damaged during shipping removal. After cap plugs are installed, then connect unit to power (see below illustration). NOTE: when mounting unit, don't forget to allow clearance for clean-out door to swing open.

### Floor standing model



Remove cover and tie into factory electrical here. Note: end user must provide on/off switch.

Bring incoming power through this conduit hole.

Drill 4 holes for support brackets, size according to hardware – use 5/8 diameter minimum for hardware.



Installation hardware needs to be selected by the end user as installation surfaces vary from concrete, to block, to wood walls. Height to install to is also up to the end user. Use at least two people to lift during installation.

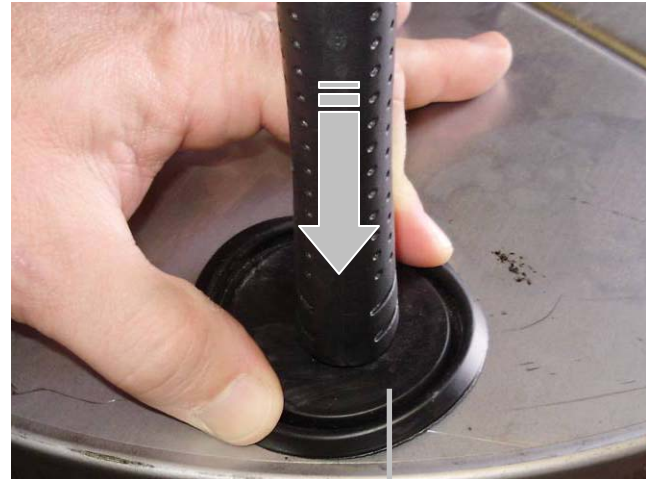
Once unit has been installed use 5871B8 cap plugs (supplied with unit) to seal holes in canister bottom located in lower cleanout door (see illustration on next page). Extra cap plugs are included with the unit in case plug becomes damaged during shipping removal. After cap plugs are installed, then connect unit to power (see below illustration). NOTE: when mounting unit, don't forget to allow clearance for clean-out door to swing open.

## Wall mount model

To attach hose,  
thread into metal hole  
counter clockwise.



Edge of  
hose will  
need to start  
here.

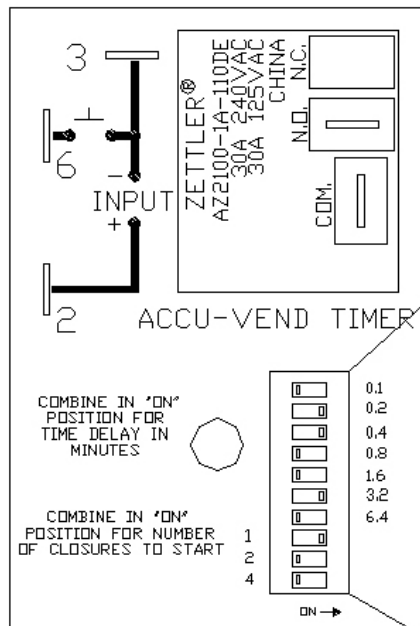


To insert 5871B8 cap plugs into bottom holes, pinch cap plug into place using index finger and thumb. With edges of plug resting against edges of hole, firmly push down on plug with end of hammer or other blunt object until plug snaps into place.



## Programming:

JE Adams commercial vacuum models typically come with an "on/off" toggle switch, but are also available with the optional push button kit which incorporates the use of a timer. The below timer pictured is the standard SSAC model that allows the end user to select the "coins to start" and the "time per coin" by settings series of dip switches. Since commercial vacuum are not typically used in a coin type situation, the coins to start will need to be set to "1" which requires the push button on the control panel to be pressed once to make the machine start. The time per coins will then need to be set, but a good rule of thumb would be 4 minutes which requires dip switches 3.2 and .8 to be set to on. This scenario will then require the user to press the push button once, and will receive 4 minutes of vacuum time. The time per coin setting can be modified as desired by simply adding or subtracting time.



SSAC TIMER

ON →

Time in minutes/per coin dip switch settings:

0.1 = 6 seconds

0.2 = 12 seconds

0.4 = 24 seconds

0.8 = 48 seconds

1.6 = 96 seconds

3.2 = 192 seconds

6.4 = 384 seconds

TIME PER  
COIN  
(MINUTES)

COINS TO  
START

## Operating Instructions:

- Turn toggle switch to on position when machine needs to run, and off position when finished.
- In the case of a push button kit, press push button to activate machine. It will automatically shut off.
- Remove vacuum hose from hanger and vacuum subject accordingly. Do not vacuum wet objects or fine dust (ex – drywall dust).
- Return vacuum hose to hanger when finished.
- In the case of a dual hose model, hose claw must be returned to hanger and set against rubber pad to eliminate leaks in vacuum system. This will allow the opposite hose to have more suction while in use.

## Maintenance:

- **All servicing of machine should be conducted by an authorized service representative!**
- Filter bags should be accessed and shaken down weekly. It is recommended to keep a new set of bags on hand so that once every few months the bags can be replaced and then laundered.
- To maintain performance, empty dirt bin from the canister on a regular basis.
- Periodically inspect wires and connections for wear or fatigue.
- Check vac hose for cracks on a weekly basis.
- Clean canister with a stainless steel cleaner as needed. Decals can be cleaned with mild soap and water.
- Check motor brushes approx. every 3 months for excessive wear. Motor brushes should be changed if they are shorter than 3/8". ***Please disconnect power before doing this.***



***DISCONNECT POWER BEFORE SERVICING OR TROUBLESHOOTING!***

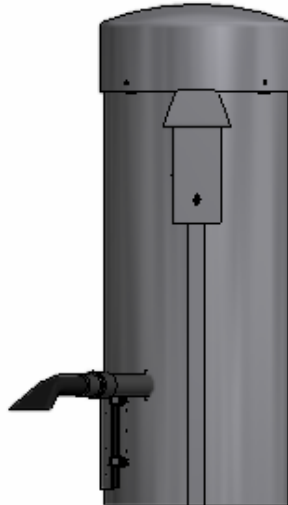


**Troubleshooting: !DISCONNECT POWER BEFORE SERVICING OR TROUBLESHOOTING!**

<b>Problem</b>	<b>Possible cause</b>	<b>Solution</b>
Unit is not powered.	Breaker inside fuse panel is not in the on position.	Turn breaker on.
	No power to machine.	Check incoming power line voltage.
	Loose connection.	Check incoming power connection.
Machine is behaving erratically.	Is the incoming power at 120V?	Check voltage and monitor while machine runs. Low voltage can cause erratic behavior.
	Are any of the machines wires worn through or connections not making contact?	Inspect wiring and connections. Look for sharp bends in wires and places where wire is against the metal chassis.
Unit keeps tripping breaker.	Inadequate wire size ran to machine.	Call electrician and install proper wire size for electrical service versus length or run.
	Wrong size breaker.	Install correct breaker (only if wire size is adequate to handle breaker).
Fuses for vac motors keep blowing.	Inadequate wire size ran to machine.	Call electrician and install proper wire size for electrical service versus length or run.
	Motor brushes may be bad or too short.	Replace motor brushes.
Lack of vacuum suction.	Vac hose clogged?	Clean debris from vac hose.
	Filter bags need cleaned or dirt chamber needs emptied?	Shake or clean filter bags or replace and empty lower dirt chamber.
	Vac hose is split?	Replace/repair vac hose.
	Cleanout door gaskets torn or worn?	Replace gaskets.
	Vac motor gaskets are worn or motor is not tight against.	Inspect/replace gaskets and assure motor is tight against them.
	Dual vac hose unit, both hoses are being used.	When both hoses are being used, suction will be lower. Double check all 3 motors are working however.
	Lower chamber cap plugs/mounting hole covers have popped out?	Open lower chamber and inspect plugs, order new if needed.
	Cleanout door gaskets torn or worn?	Replace gaskets.
	One of the vac motors is not working?	Check line motor fuse and replace. Replace motor if necessary.

PART NO.	8105
----------	------

BILL OF MATERIALS				BILL OF MATERIALS			
ITEM	PART NUMBER	DESCRIPTION	QTY	ITEM	PART NUMBER	DESCRIPTION	QTY
36	8221WH2	2 MOTOR WIRE HARNESS	1	1	2036	HOSE, 2" X 15' BLACK VACUUM	1
37	8423-2	DECAL, DOME	1	2	2058	CLAW/CUFF ASSEMBLY, Z'	1
38	8424-1	DECAL, CANISTER	1	3	5600D4	3/8-16 X 1.5 HHCS	4
39	8429-1	DECAL, HANG HOSE	1	4	5603D1	10 Std NC Nylock Nut	1
40	8437D001	DECAL, ELT LISTE	1	5	5603D11	1/2 Std NC Nylock Nut	1
41	8505-1	COVER, CONTROL PLATE	1	6	5606D22	WASHER 3/8	8
42	8605	PALLET	1	7	5606D7	FLAT WASHER, .160 ID X .500 OD	1
43	8615-5W	CLEANOUT DOOR WELDMENT	1	8	5619D1	SCR, HEX SOC BUT, HD CPCW, 1	4
44	8630B36	BUBBLE WRAP	26"	9	5619D1	HEX HEAD CAP	4
45	8631	11 X 55 PAD FOR VAC'S	1	10	5629D2	#8 x 1/2 SELF TAPPING SCREW	2
46	8673-10	2 M HARNESS	1	11	5636D1	#10-24 PHIL. PAN HEAD SCREW	2
47	8828	TOGGLE SWITCH PLATE	1	12	5639D4	RUBBER GROMMET	1
48	8918	ON-OFF SWITCH	1	13	5647D2	1/8" SS POP RIVET	16
49	B5722-002	3/8-16 LOCK NUT	1	14	5647D8	3/16" SS POP RIVET	14

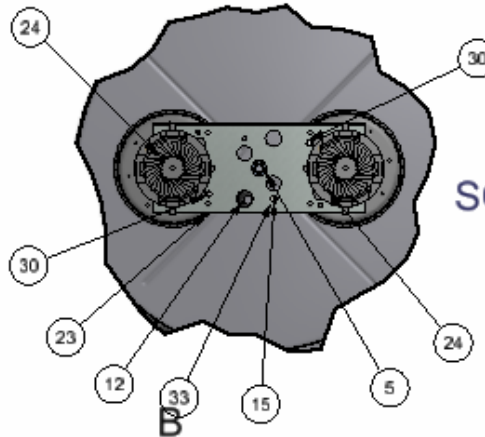
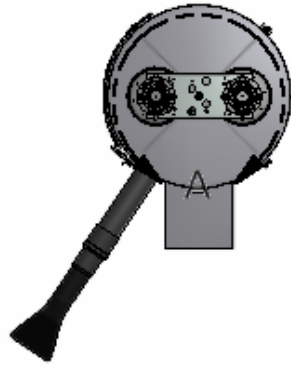


15	5662D2	6-32 x 1/2 PHIL. PAN -MACHINE SCREW	1
16	5871B8	PLUG, VAC BOTTOM	8
17	5901D1	YELLOW WIRE NUT	2
18	5901D4	ORNAGE WIRE NUT	2
19	5903D1	4 POS TERMINAL STRIP	1
20	5920	BOOT, TOGGLE SWITCH	1
21	6082	BAG, 9 X 12	1
22	8047	BAG, 60 X 72	1
23	8051G	BRACKET, MOTOR MOUNT	1
24	8055EM	MOTOR, ELECTRO 120V	2
25	8055LEAD-EM	WIRE LEAD ELECTRO MOTOR	4
26	8079	ASSEMBLY, FILTER BAG	2
27	8081	CABLE TIE MOUNT	2
28	8084	CABLE TIE	3
29	8101	20" STAINLESS STEEL DOME	1
30	8108	#10 x 1/2 TAP SCREW	2
31	8119W	COMMERCIAL ECONOVAC CANISTER W/C	1
32	8153-1	LATCH, CLEANOUT DOOR	2
33	8157	NUT, #6-32 KEPP NUT STAINLESS	1
34	8159	DOOR GASKET	1
35	8183	DECAL, WARNING	2

A	6997	CREATED INVENTOR DRAWING; NO PREVIOUS DRAWING EXISTED	7-17-12	CK
REV	NO.	DESCRIPTION	DATE	BY

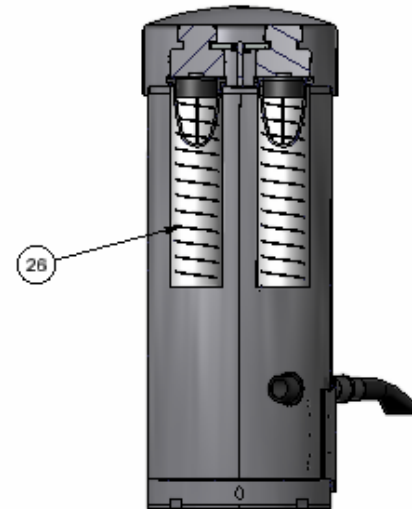
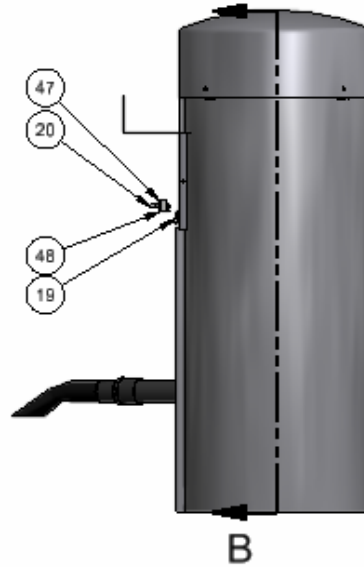
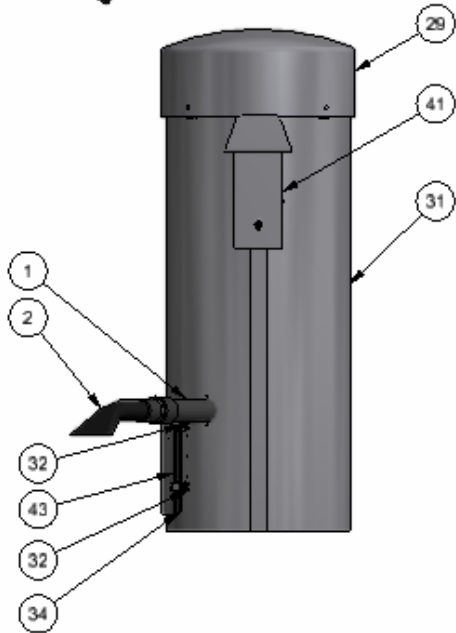
THIS DOCUMENT SHALL NOT BE REPRODUCED NOR SHALL THE INFORMATION THEREIN BE USED BY OR DISCLOSED TO OTHERS EXCEPT AS AUTHORIZED BY J.E. ADAMS INDUSTRIES

TITLE <b>ECONO CLASS COMMERCIAL VACUUM</b>		CEDAR RAPIDS, IOWA	
UNSPECIFIED TOLERANCES	MATERIAL		PART NO. <b>8105</b>
1 PL ±.030	SCALE		
2 PL ±.010	DRAWN BY <b>CHAD K.</b>		
3 PL ±.003	DATE <b>7/17/2012</b>	REV. <b>A</b>	
ANGLE ±1.0°			



DETAIL A  
SCALE 0.12 : 1

SECTION B-B  
SCALE 0.06 : 1



TITLE  
**ECONO CLASS COMMERCIAL VACUUM**

UNSPECIFIED TOLERANCES

- 1 PL ±.030
- 2 PL ±.010
- 3 PL ±.003
- ANGLE ±1.0°

MATERIAL  
SCALE  
DRAWN BY **CHAD K.**  
DATE **7/17/2012**



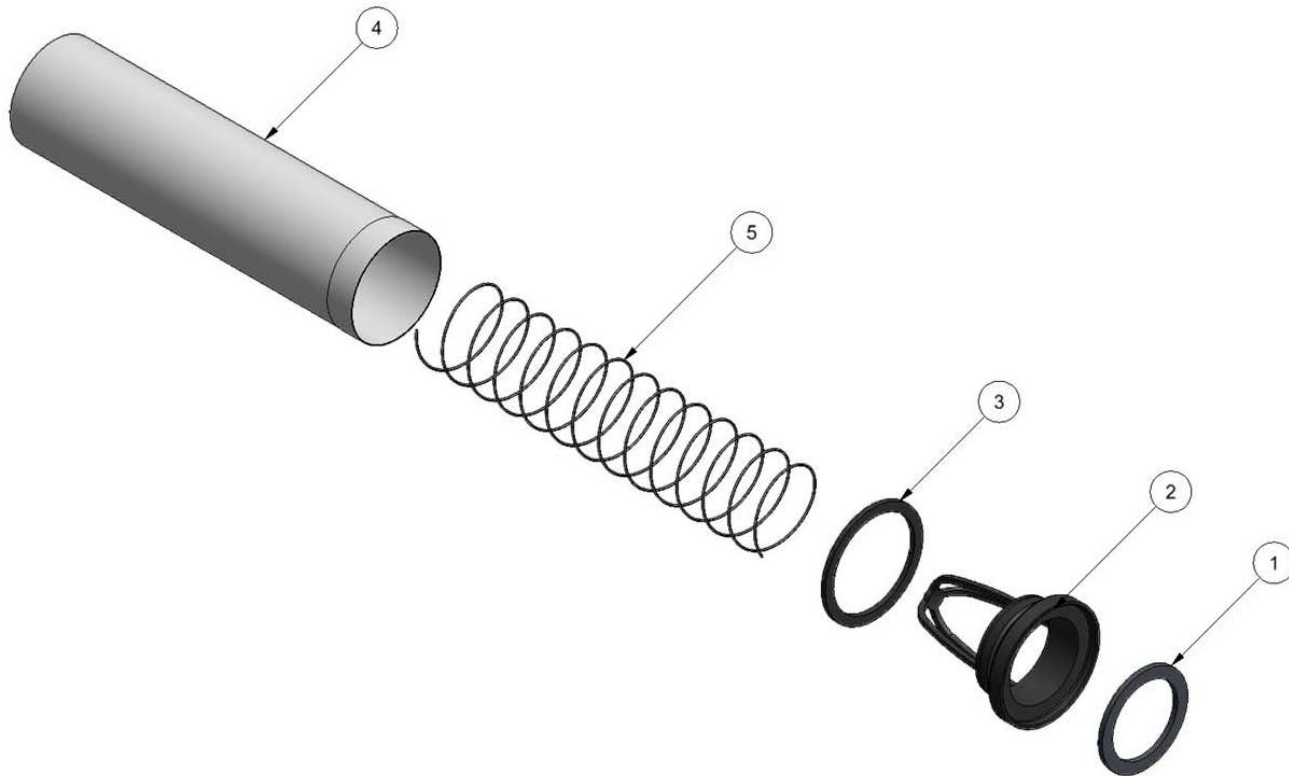
PART NO. **8105** REV. **A**

REV	NO.	DESCRIPTION	DATE	BY
-----	-----	-------------	------	----

THIS DOCUMENT SHALL NOT BE REPRODUCED NOR SHALL THE INFORMATION THEREIN BE USED BY OR DISCLOSED TO OTHERS EXCEPT AS AUTHORIZED BY J.E. ADAMS INDUSTRIES

EXPLODED VIEW: 8079 FILTER BAG ASSEMBLY

BILL OF MATERIALS			
ITEM	PART NUMBER	DESCRIPTION	QTY
1	8057	MOTOR GASKET	1
2	8060	MOTOR BUSHING	1
3	8063	BUSHING GASKET	1
4	8072	FILTER BAG W/ O-RING	1
5	8075	FILTER BAG SPRING	1



THIS DOCUMENT SHALL NOT BE REPRODUCED NOR SHALL THE INFORMATION THEREIN BE USED BY OR DISCLOSED TO OTHERS EXCEPT AS AUTHORIZED BY J.E. ADAMS INDUSTRIES


CEDAR RAPIDS, IOWA



PART NO. **8079**

PART NO.		9225		BILL OF MATERIALS				BILL OF MATERIALS			
ITEM	PART NUMBER	DESCRIPTION	QTY	ITEM	PART NUMBER	DESCRIPTION	QTY				
33	8159	DOOR GASKET	2	1	1000	BIRD SEED, 10LBS	1				
34	8183	DECAL, WARNING	2	2	2036	HOSE, 2" X 15' BLACK VACUUM	1				
35	8221WH2	2 MOTOR WIRE HARNESS	1	3	2058	CLAW/CUFF ASSEMBLY, 2"	1				
36	8423-2	DECAL, DOME	1	4	5600D4	3/8-16 X 1.5 HHCS	4				
37	8424-1	DECAL, CANISTER	1	5	5603D1	10 Std NC Nylock Nut	1				
38	8429-1	DECAL, HANG HOSE	1	6	5603D11	1/2 Std NC Nylock Nut	1				
39	8437D001	DECAL, ETL LISTED	1	7	5606D22	WASHER, 3/8 FENDER	8				
40	8505-1	COVER, CONTROL PLATE	1	8	5606D7	FLAT WASHER, .160 ID X .500 OD	1				
41	8605	PALLET, VAC, 26" X 30.5"	1	9	5619D1	SCR, HEX SOC BUT, HD CPCW, 1	4				
42	8615-5W	CLEANOUT DOOR WELDMENT	2	10	5627D2	Pan Head, Slotted, 6-32 x 5/8	1				
43	8630B36	BUBBLE WRAP	26"	11	5636D1	#10-24 PHIL. PAN HEAD SCREW	2				
44	8631	11 X 55 PAD FOR VAC	1	12	5639D4	RUBBER GROMMET	1				
45	8673-10	2 MTR COMMERCIAL WIRE HARNESS	1	13	5647D2	1/8" SS POP RIVET	16				
46	8828	TOGGLE SWITCH PLATE	1	14	5647D8	3/16" SS POP RIVET	14				
47	9226W	CANISTER WELDMENT, 2D, COMMERCIAL	1	15	5871B9	PLASTIC VAC LID PLUG	4				
48	B5722-002	NUT, 3/8-16 UNC HEX LOCK NUT	4	16	5871b8	PLUG, VAC BOTTOM 2-1/2"	8				
				17	5901D1	YELLOW WIRE NUT	2				
				18	5901D4	ORANGE WIRE NUT	2				
				19	5920	BOOT, TOGGLE SWITCH	1				
				20	6082	BAG, 9 X 12	1				
				21	8047	BAG, 60 X 72	1				
				22	8051G	BRACKET, MOTOR MOUNT	1				
				23	8055EM	MOTOR, ELECTRO 120V	2				
				24	8055LEAD-EM	WIRE LEAD, EM VAC MOTOR	4				
				25	8057	MOTOR GASKET	2				
				26	8076	FILTER BAG	4				
				27	8081	CABLE TIE MOUNT	2				
				28	8084	CABLE TIE	3				
				29	8101	20" STAINLESS STEEL DOME	1				
				30	8108	#10 x 1/2 TAP SCREW	4				
				31	8153-1	LATCH, CLEANOUT DOOR	4				
				32	8157	NUT, #6-32 KEPP NUT STAINLESS	1				


  

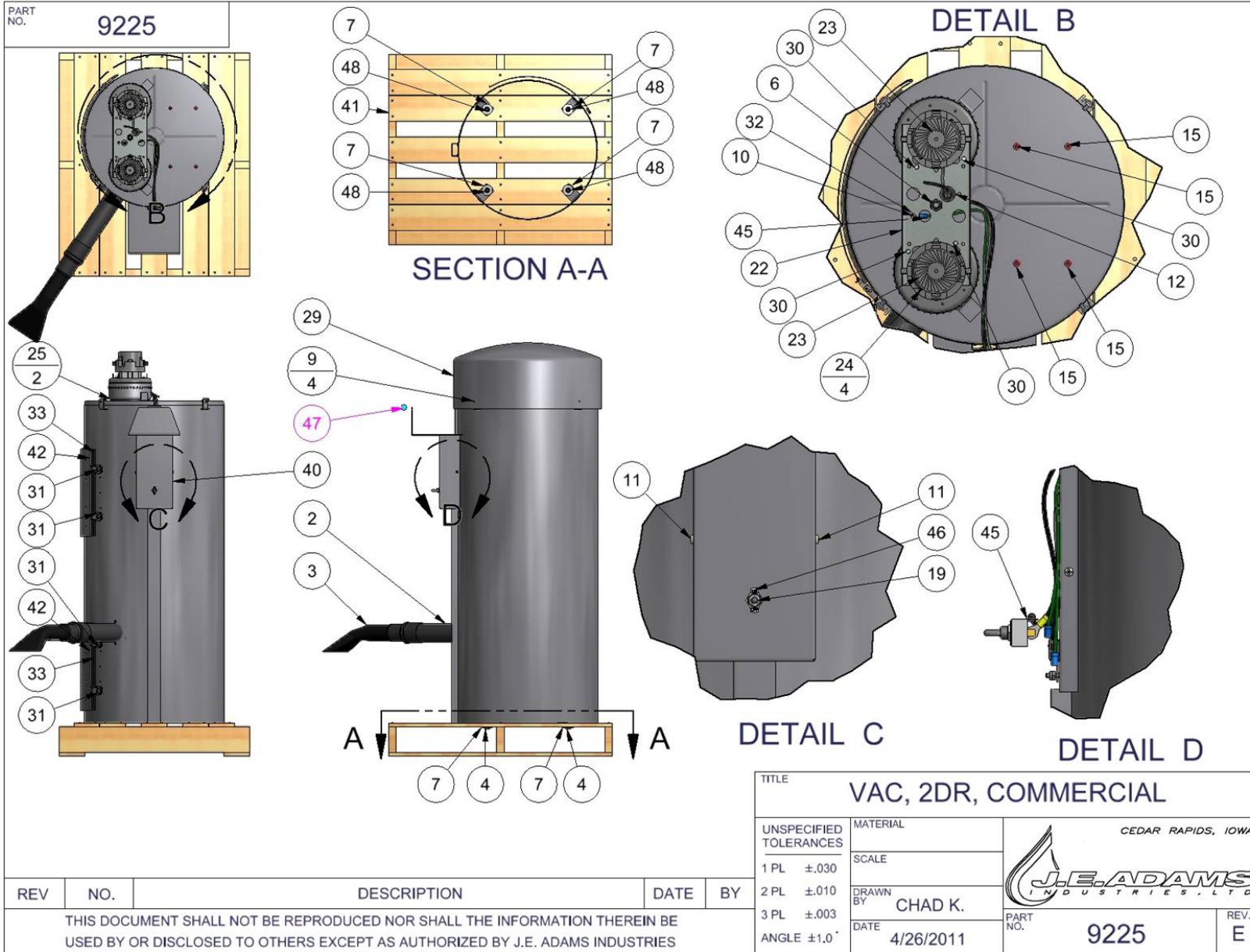


E					6472	REVISED AND REDRAWN TO INVENTOR FROM AUTOCAD	4-26-11	CK
REV					NO.	DESCRIPTION	DATE	BY
THIS DOCUMENT SHALL NOT BE REPRODUCED NOR SHALL THE INFORMATION THEREIN BE USED BY OR DISCLOSED TO OTHERS EXCEPT AS AUTHORIZED BY J.E. ADAMS INDUSTRIES								

TITLE				VAC, 2DR, COMMERCIAL			
UNSPECIFIED TOLERANCES		MATERIAL		CEDAR RAPIDS, IOWA			
1 PL ±.030		SCALE					
2 PL ±.010		DRAWN BY					
3 PL ±.003		CHAD K.					
ANGLE ±1.0°		DATE		PART NO.		REV.	
		4/26/2011		9225		E	





PART NO. 9235-3LD

BILL OF MATERIALS

ITEM	PART NUMBE	DESCRIPTION	QTY
29	8306	24" PLASTIC DOME	1
30	8424-1	DECAL, CANISTER	1
31	8429-1	DECAL, HANG HOSE	1
32	8437D001	DECAL, ETL LISTED	1
33	8505-1	COVER, CONTROL PLATE	1
34	8543K-3	3 MOTOR LIGHT KIT	1
35	8605	PALLET, VAC, 26" X 30.5"	1
36	8615-5W	CLEANOUT DOOR WELDMENT	2
37	8631	11 X 55 PAD FOR VAC	1
38	8673-10-3	3 MTR COMMERCIAL WIRE HARNESS	1
39	8732	NAMEPLATE, PRODUCT SPEC'S	1
40	8754	WARNING DECAL	1
41	8828	TOGGLE SWITCH PLATE	1
42	8925	FLOURESCENT BULB	3
43	9236-3W	CANISTER WELDMENT, 2D, 3 MTR COMMERCIAL	1
44	B5722-002	NUT, 3/8-16 UNC HEX LOCK NUT	4



ITEM	PART NUMBE	DESCRIPTION	QTY
1	1000	BIRD SEED, 10LBS	1
2	2036	HOSE, 2" X 15' BLACK VACUUM	1
3	2058	CLAW/CUFF ASSEMBLY, 2"	1
4	5600D4	3/8-16 X 1.5 HHCS	4
5	5601D13	1/4-20 x 3/4 AQ BR OSC FAN	4
6	5603D1	10 Std NC Nylock Nut	1
7	5603D11	1/2 Std NC Nylock Nut	1
8	5606D22	WASHER, 3/8 FENDER	8
9	5606D7	FLAT WASHER, .160 ID X .500 OD	1
10	5627D2	Pan Head, Slotted, 6-32 x 5/8	1
11	5636D1	#10-24 PHIL. PAN HEAD SCREW	2
12	5647D2	1/8" SS POP RIVET	16
13	5647D8	3/16" SS POP RIVET	14
14	5871b8	PLUG, VAC BOTTOM 2-1/2"	8
15	5920	BOOT, TOGGLE SWITCH	1
16	6082	BAG, 9 X 12	1
17	8047	BAG, 60 X 72	1
18	8055EM	MOTOR, ELECTRO 120V	3
19	8057	MOTOR GASKET	3
20	8076	FILTER BAG	4
21	8081	CABLE TIE MOUNT	2
22	8084	CABLE TIE	3
23	8108	#10 x 1/2 TAP SCREW	6
24	8153-1	LATCH, CLEANOUT DOOR	4
25	8157	NUT, #6-32 KEPP NUT STAINLESS	1
26	8159	DOOR GASKET	2
27	8183	DECAL, WARNING	2
28	8221WH3	WIRE HARNESS, 3 MOTOR	1

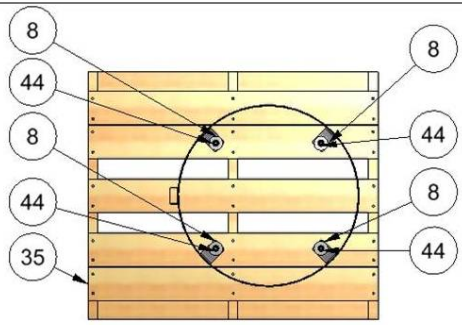
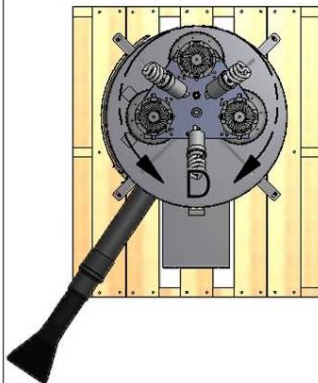
TITLE VAC, 2DR, 3 MOTOR COMMERCIAL, LD

A	6486	REVISED AND DRAWN TO INVENTOR; NO PREVIOUS DRAWING	4-29-11	CK
REV	NO.	DESCRIPTION	DATE	BY

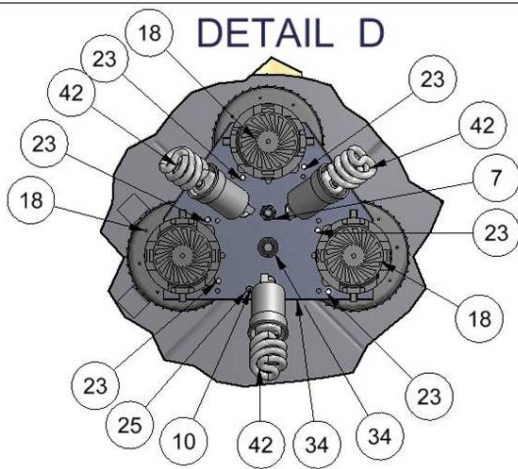
THIS DOCUMENT SHALL NOT BE REPRODUCED NOR SHALL THE INFORMATION THEREIN BE USED BY OR DISCLOSED TO OTHERS EXCEPT AS AUTHORIZED BY J.E. ADAMS INDUSTRIES

UNSPECIFIED TOLERANCES	MATERIAL	
1 PL ±.030	SCALE	
2 PL ±.010	DRAWN BY CHAD K.	
3 PL ±.003	DATE 4/29/2011	PART NO. 9235-3LD
ANGLE ±1.0°		REV. A

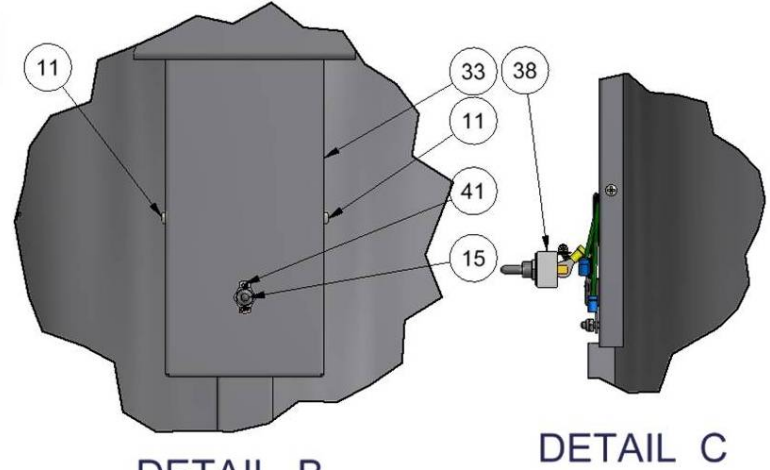
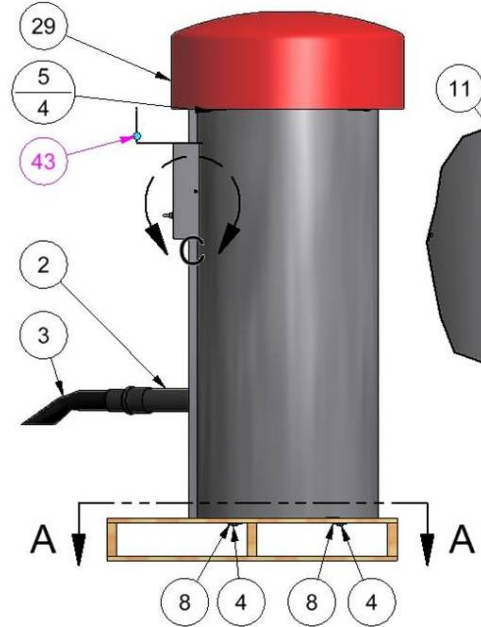
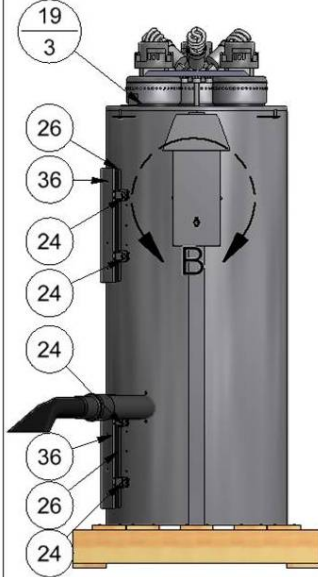
PART NO. 9235-3LD



SECTION A-A



DETAIL D



DETAIL B

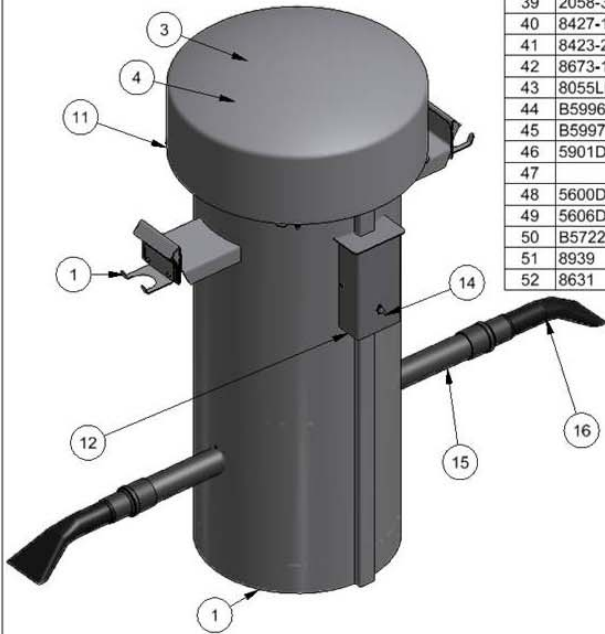
DETAIL C

REV	NO.	DESCRIPTION	DATE	BY
THIS DOCUMENT SHALL NOT BE REPRODUCED NOR SHALL THE INFORMATION THEREIN BE USED BY OR DISCLOSED TO OTHERS EXCEPT AS AUTHORIZED BY J.E. ADAMS INDUSTRIES				

TITLE VAC, 2DR, 3 MOTOR COMMERCIAL, LD		CEDAR RAPIDS, IOWA	
UNSPECIFIED TOLERANCES	MATERIAL		
1 PL ±.030	SCALE		
2 PL ±.010	DRAWN BY CHAD K.		
3 PL ±.003	DATE 4/29/2011	PART NO. 9235-3LD	REV. A
ANGLE ±1.0°			

PART NO. **9235-3DH**

BILL OF MATERIALS				BILL OF MATERIALS			
ITEM	PART NUMBER	DESCRIPTION	QTY	ITEM	PART NUMBER	DESCRIPTION	QTY
30	8597	WASHER, 5/16 SAE FLAT ZP	3	1	9236-3W-DH	3 MOTOR VAC CANISTER W/C	1
31	8598	WASHER, 5/16 LOCK ZP	3	2	8057	MOTOR GASKET	3
32	8732	NAME PLATE, PRODUCT SPEC	1	3	8055	MOTOR, AMETEK 115V	3
33	8437D001	DECAL - ETL LISTED ANSI/UL	1	4	8051-3M	3 MOTOR BRACKET	3
34	5871B8	PLUG, RECESSED	8	5	5603D11	1/2 Std NC Nylock Nut	1
35	6082	BAG 9 X 12	1	6	8076	FILTER BAG	4
36	9280f22		2	7	8108	#10 x 1/2 TAP SCREW	6
37	5601D4	1/4-20 x 3/4 HHCS-SS	4	8	5611D2	NUT, 10-24 UNC KEPP- ZINC	1
38	5603D2	1/4 Std NC Nylock Nut	4	9	5639D4	RUBBER GROMMET	1
39	2058-3	RUBBER PAD, HOSE HANGER	2	10	5627D2	Pan Head, Slotted, 6-32 x 5/8	2
40	8427-1	DECAL, VACUUM	2	11	8305	24" STAINLESS STEEL DOME	1
41	8423-2	DECAL, VACUUM DOME	1	12	8505-1	COVER, CONTROL PLATE	1
42	8673-10-3	WIRING ASSY	1	13	8828	TOGGLE SWITCH PLATE	1
43	8055LEAD	MOTOR LEAD	6	14	5920	BOOT, TOGGLE SWITCH	1
44	B5996-010	FUSE, 10A	3	15	2036	HOSE, 2" X 15' BLACK VACUUM	2
45	B5997-001	FUSE HOLDER, INLINE	3	16	2058	CLAW/CUFF ASSEMBLY, 2"	2
46	5901D2	WIRE NUT, RED	2	17	5636D1	#10-24 PHIL. PAN HEAD SCREW	1
47		PACKAGING		18	8159	DOOR GASKET	2
48	5600D4	BOLT HHEAD 3/8-16 X 1-1/2	4	19	8615-5W	CLEANOUT DOOR WELDMENT	2
49	5606D22	FENDER WASHER, 3/8	8	20	8153-1	LATCH CLEANOUT DOOR	4
50	B5722-002	NUT, HEX LOCKNUT	4	21	8081	CABLE TIE MOUNT	1
51	8939	PALLET	1	22	8084	CABLE TIE NYLON	3
52	8631	11 X 55 PAD	1	23	8100N002	INS TAG, YELLOW REMOVE	1
				24	5647D2	RIVET - 1/8 SS POP	16
				25	5647D8	RIVET - 3/16 SS POP	14
				26	8182	WARNING DISCON DECAL	1
				27	8764	DANGER DECAL	1
				28	8595	HHCS 5/16 X 1-1/2 ZP	3
				29	8596	NUT, 5/16-18 HEX ZP	3



THIS MODEL IS A SPECIAL "DUAL HOSE" UNIT BASED ON JE ADAMS MODEL 9235-3. NOTE: HOSES HAVE LIMITED SHUTOFFS BUT MOST AIR FLOW IS OBSTRUCTED WHILE HOSES HANG IN HOLDERS.

					TITLE	
					COMMERCIAL VAC - 3 MOTOR, 2 DOOR	
C	5541	CHANGE TO LARGER PALLET 8939, WAS 8605	020910	JF		
B	5293	ADJUST BILL FOR NEW WIRING HARNESS WITH SWITCH	100709	JF	UNSPECIFIED TOLERANCES	MATERIAL
A	5047	ADD HARDWARE, REMOVE RELAY BRKT HRDWARE, REVISE DESC.	040109	JF	1 PL ±.030	SCALE
REV	NO.	DESCRIPTION	DATE	BY	2 PL ±.010	DRAWN BY
					3 PL ±.003	JOHN F.
THIS DOCUMENT SHALL NOT BE REPRODUCED NOR SHALL THE INFORMATION THEREIN BE USED BY OR DISCLOSED TO OTHERS EXCEPT AS AUTHORIZED BY J.E. ADAMS INDUSTRIES					DATE	10/16/2008
					PART NO.	9235-3DH
					REV.	C

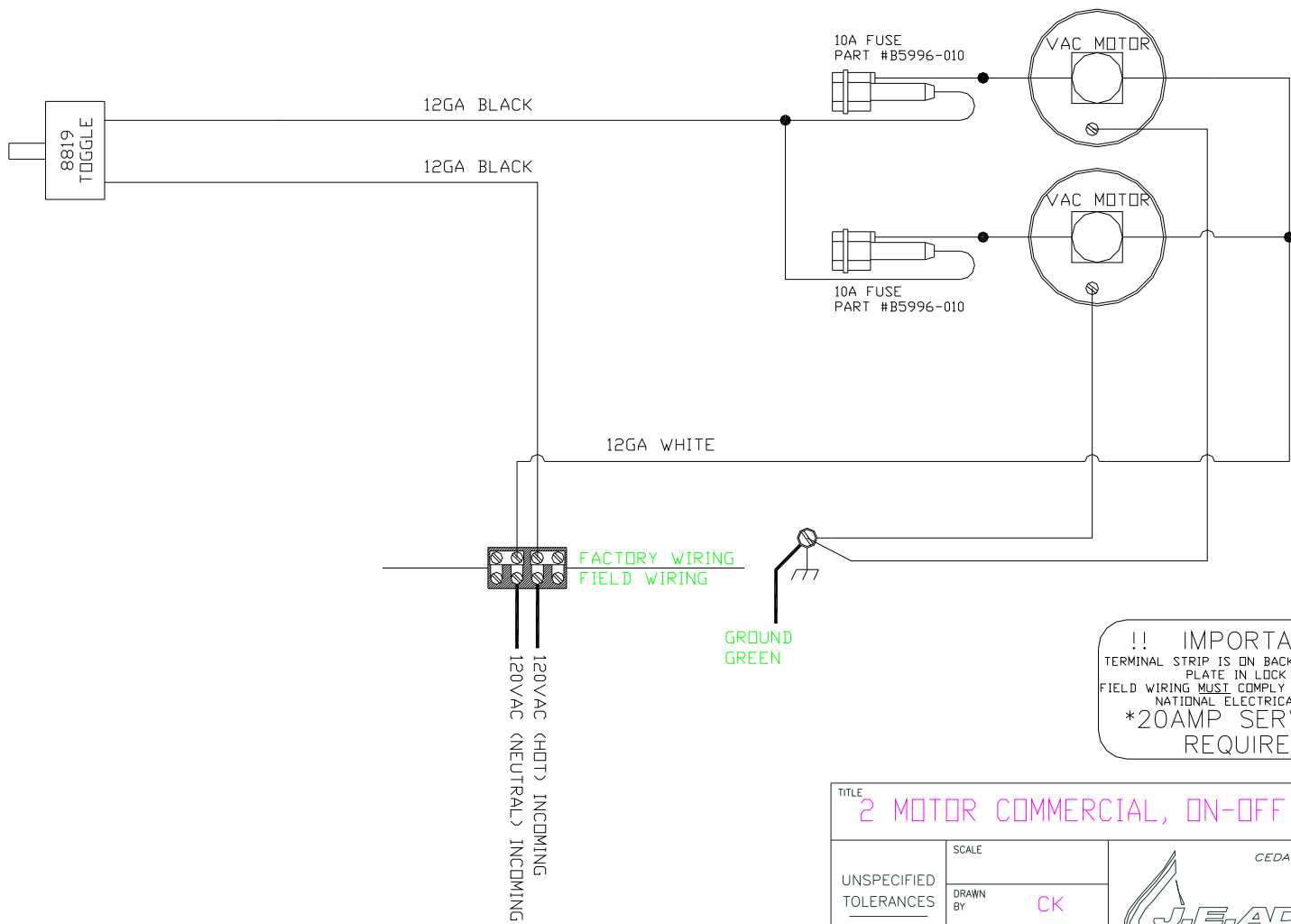


PART NO. 2 MOTOR COMMERCIAL

THIS DOCUMENT SHALL NOT BE REPRODUCED NOR SHALL THE INFORMATION THEREIN BE USED BY OR DISCLOSED TO OTHERS EXCEPT AS AUTHORIZED BY J.E. ADAMS INDUSTRIES

BILL OF MATERIAL

ITEM NO.	PART NO.	DESCRIPTION	QTY.
----------	----------	-------------	------



**!! IMPORTANT !!**  
 TERMINAL STRIP IS ON BACK SIDE OF TIMER PLATE IN LOCK BDX  
 FIELD WIRING MUST COMPLY WITH LOCAL AND NATIONAL ELECTRICAL CODES  
 \*20AMP SERVICE IS REQUIRED\*

TITLE 2 MOTOR COMMERCIAL, ON-OFF TOGGLE

UNSPECIFIED TOLERANCES	SCALE
FRACT. ±1/32	DRAWN BY CK
2 PL ±.020	DATE 7-27-11
3 PL ±.010	REL. FOR PROD. -
ANGLE ±1.0°	



REV	NO.	DESCRIPTION	DATE	BY
-----	-----	-------------	------	----

PART NO. 2 MOTOR COMMERCIAL	REV.
-----------------------------	------

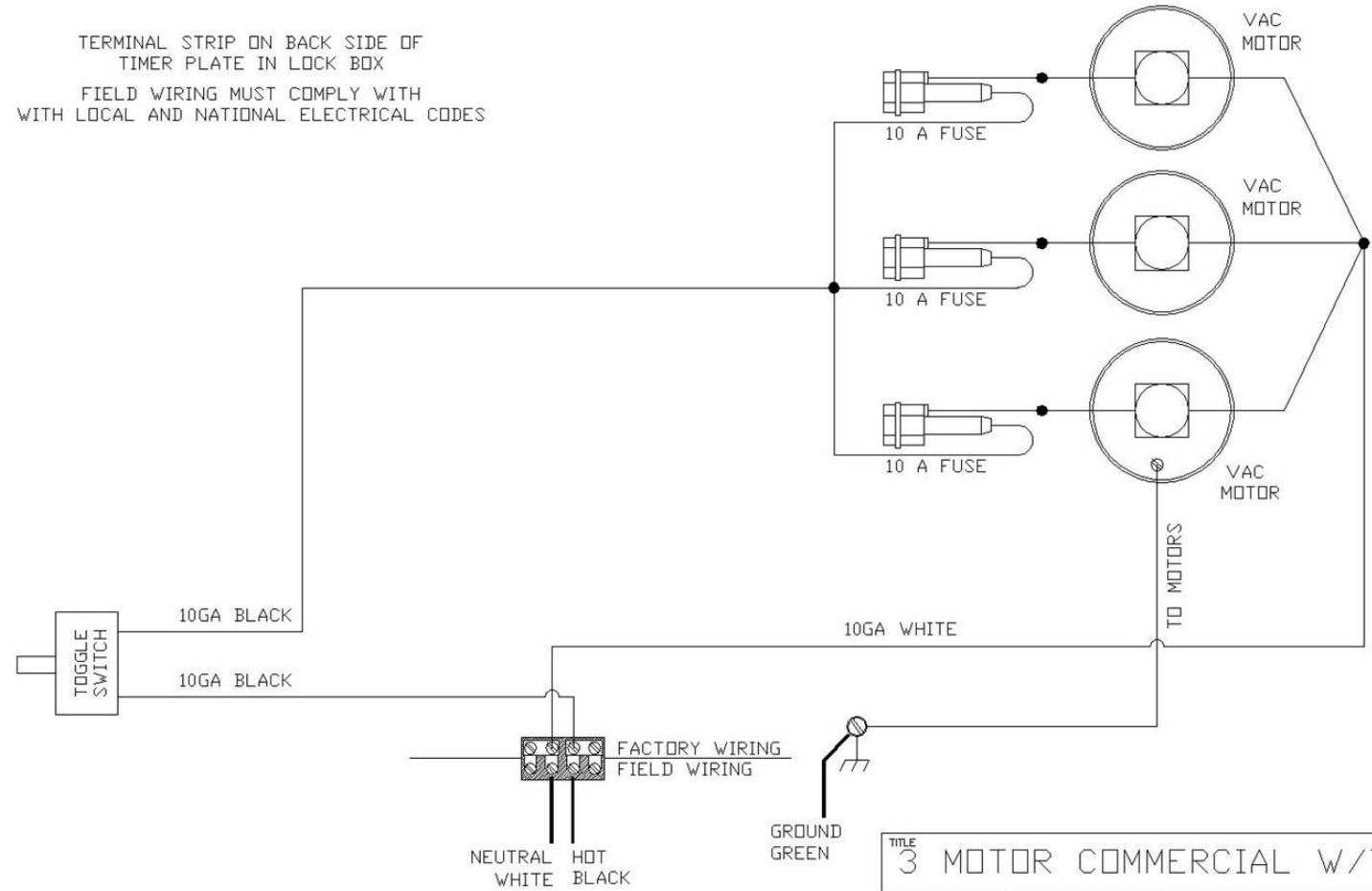
PART NO. 3 MOTOR SERIES

THIS DOCUMENT SHALL NOT BE REPRODUCED NOR SHALL THE INFORMATION THEREIN BE USED BY OR DISCLOSED TO OTHERS EXCEPT AS AUTHORIZED BY J.E. ADAMS INDUSTRIES

BILL OF MATERIAL


ITEM NO.	PART NO.	DESCRIPTION	QTY.
----------	----------	-------------	------

TERMINAL STRIP ON BACK SIDE OF  
TIMER PLATE IN LOCK BOX  
  
FIELD WIRING MUST COMPLY WITH  
WITH LOCAL AND NATIONAL ELECTRICAL CODES



120V with toggle

TITLE 3 MOTOR COMMERCIAL W/TOGGLE

UNSPECIFIED TOLERANCES	SCALE	 CEDAR RAPIDS, IOWA
FRACT. ±1/32	DRAWN BY JF	
2 PL ±.020	DATE 7/25/11	PART NO. 3 MOTOR SERIES REV.
3 PL ±.010	REL FOR PROD. -	
ANGLE ±1.0°		

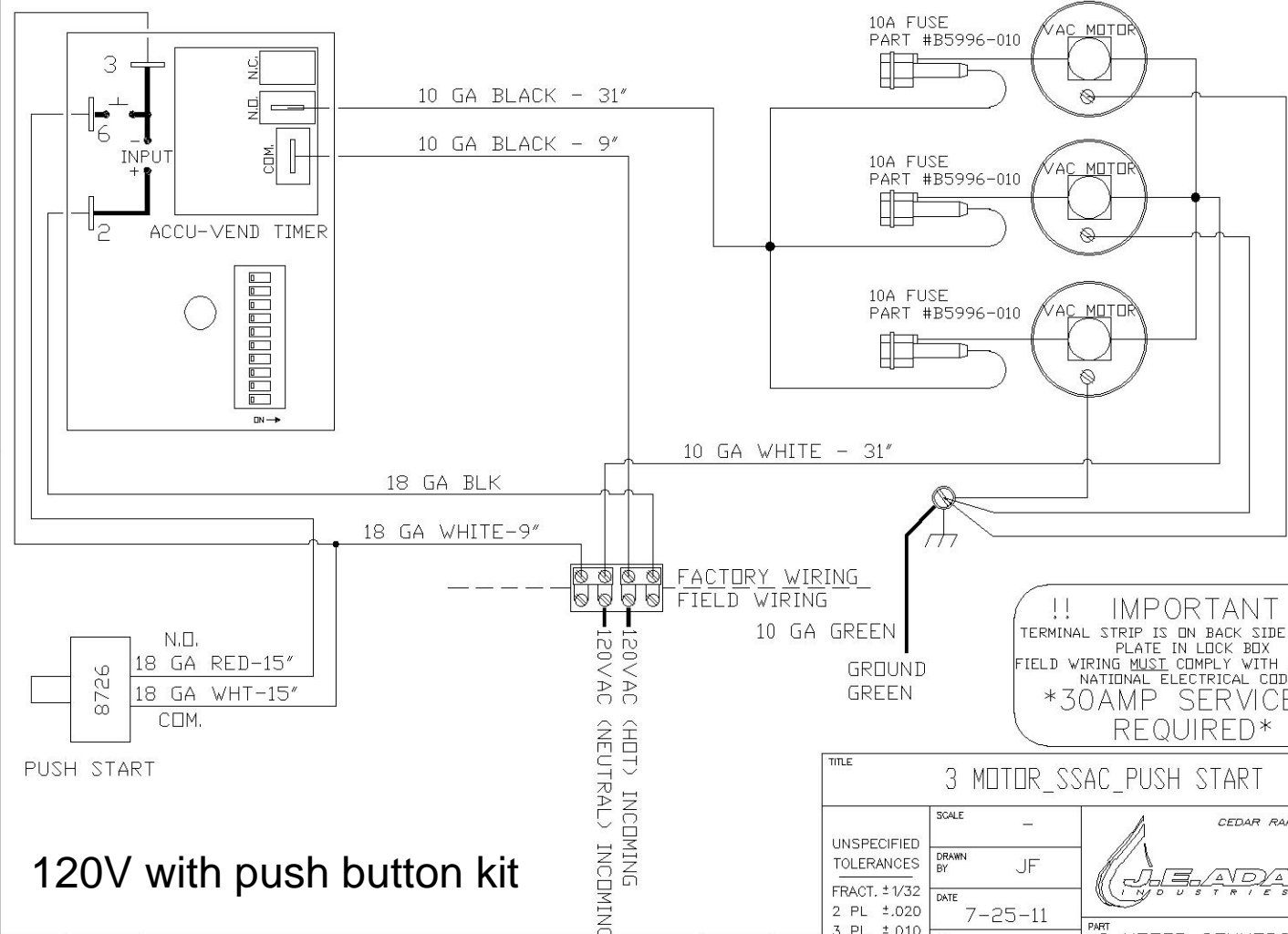
REV	NO.	DESCRIPTION	DATE	BY
-----	-----	-------------	------	----

PART NO. 3 MOTOR COMMERCIAL

THIS DOCUMENT SHALL NOT BE REPRODUCED NOR SHALL THE INFORMATION THEREIN BE USED BY OR DISCLOSED TO OTHERS EXCEPT AS AUTHORIZED BY J.E. ADAMS INDUSTRIES

BILL OF MATERIAL

ITEM NO.	PART NO.	DESCRIPTION	QTY.
----------	----------	-------------	------



**!! IMPORTANT !!**  
 TERMINAL STRIP IS ON BACK SIDE OF TIMER  
 PLATE IN LOCK BOX  
 FIELD WIRING MUST COMPLY WITH LOCAL AND  
 NATIONAL ELECTRICAL CODES  
**\*30AMP SERVICE IS  
 REQUIRED\***

**120V with push button kit**

TITLE 3 MOTOR_SSAC_PUSH START		CEDAR RAPIDS, IOWA	
SCALE -	DRAWN BY JF		
UNSPECIFIED TOLERANCES FRACT. ± 1/32 2 PL ± .020 3 PL ± .010 ANGLE ± 1.0°	DATE 7-25-11		
REL. FOR PROD.	PART NO. 3 MOTOR COMMERCIAL	REV.	

REV	NO.	DESCRIPTION	DATE	BY
-----	-----	-------------	------	----

PART NO.

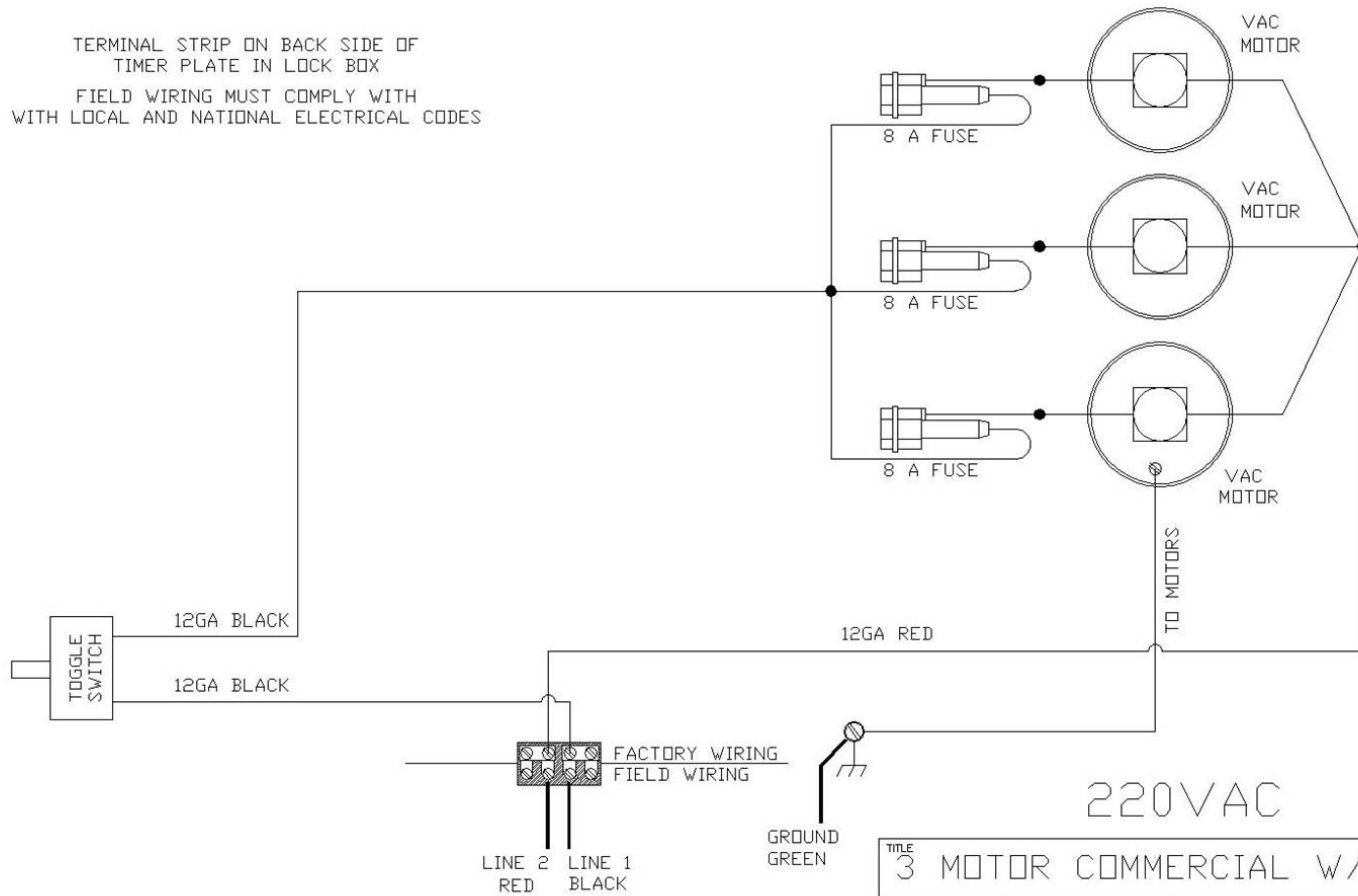
3 MOTOR SERIES

THIS DOCUMENT SHALL NOT BE REPRODUCED NOR SHALL THE INFORMATION THEREIN BE USED BY OR DISCLOSED TO OTHERS EXCEPT AS AUTHORIZED BY J.E. ADAMS INDUSTRIES

BILL OF MATERIAL

ITEM NO.	PART NO.	DESCRIPTION	QTY.
----------	----------	-------------	------

TERMINAL STRIP ON BACK SIDE OF  
TIMER PLATE IN LOCK BOX  
FIELD WIRING MUST COMPLY WITH  
WITH LOCAL AND NATIONAL ELECTRICAL CODES



220V with toggle

TITLE  
3 MOTOR COMMERCIAL W/TOGGLE

UNSPECIFIED TOLERANCES	SCALE
FRACT. ±1/32	DRAWN BY JF
2 PL ±.020	DATE 7/25/11
3 PL ±.010	REL. FOR PRD.
ANGLE ±1.0°	



PART NO. 3 MOTOR SERIES REV.

REV	NO.	DESCRIPTION	DATE	BY
-----	-----	-------------	------	----

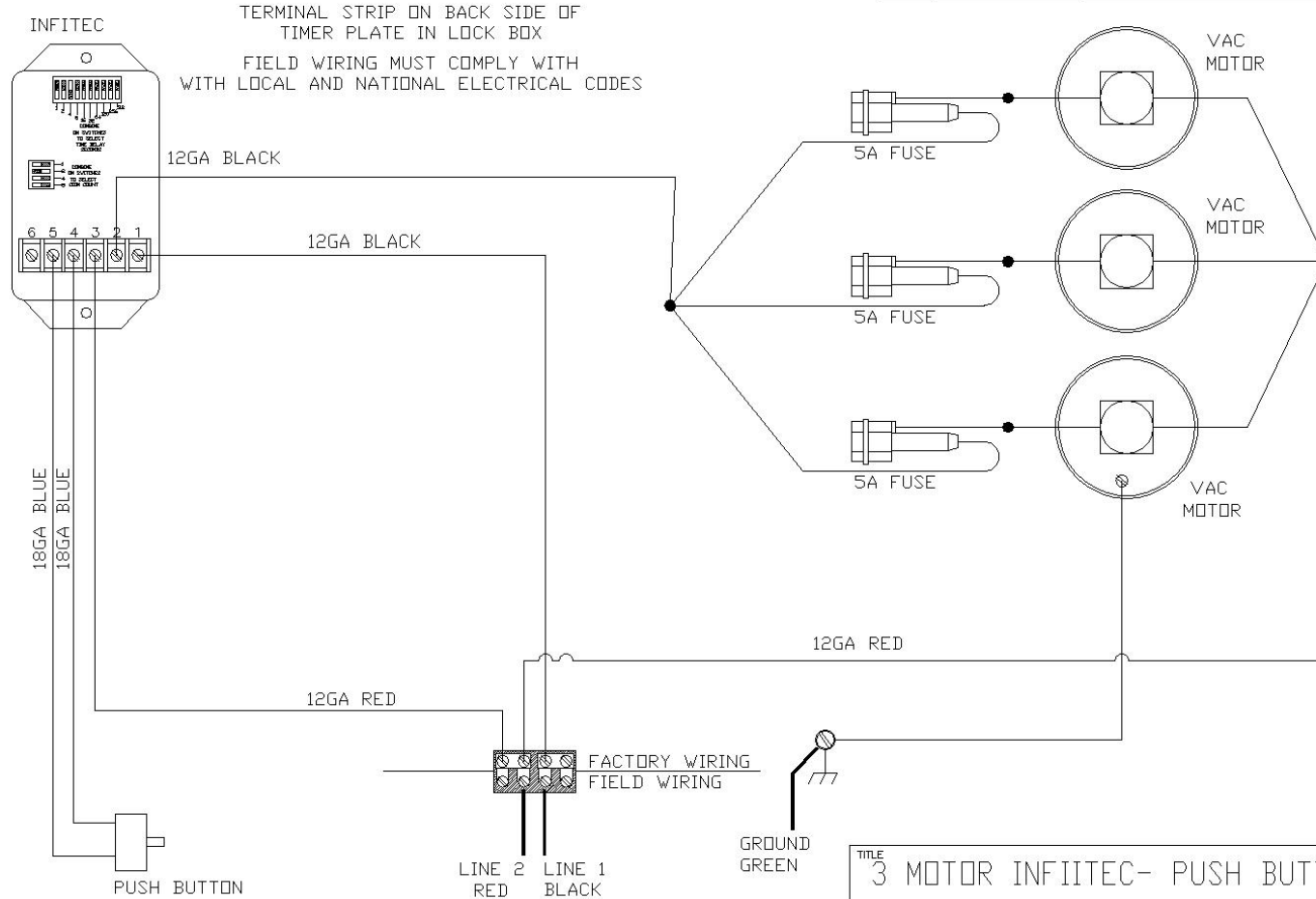
PART NO. 3

**MOTOR SERIES**

THIS DOCUMENT SHALL NOT BE REPRODUCED NOR SHALL THE INFORMATION THEREIN BE USED BY OR DISCLOSED TO OTHERS EXCEPT AS AUTHORIZED BY J.E. ADAMS INDUSTRIES


**BILL OF MATERIAL**

ITEM NO.	PART NO.	DESCRIPTION	QTY.
----------	----------	-------------	------



**220V with push button kit**

TITLE **3 MOTOR INFIITEC- PUSH BUTTON-220V**

UNSPECIFIED TOLERANCES	SCALE	 <p>CEDAR RAPIDS, IOWA</p>
FRACT. ±1/32	DRAWN BY JF	
2 PL ±.020	DATE 7/25/11	<p>PART NO. <b>3 MOTOR SERIES</b></p>
3 PL ±.010	REL FOR PROD.	
ANGLE ±1.0°		

REV	NO.	DESCRIPTION	DATE	BY
-----	-----	-------------	------	----